

ROECO

Bearing Data

Ball Bearing Units

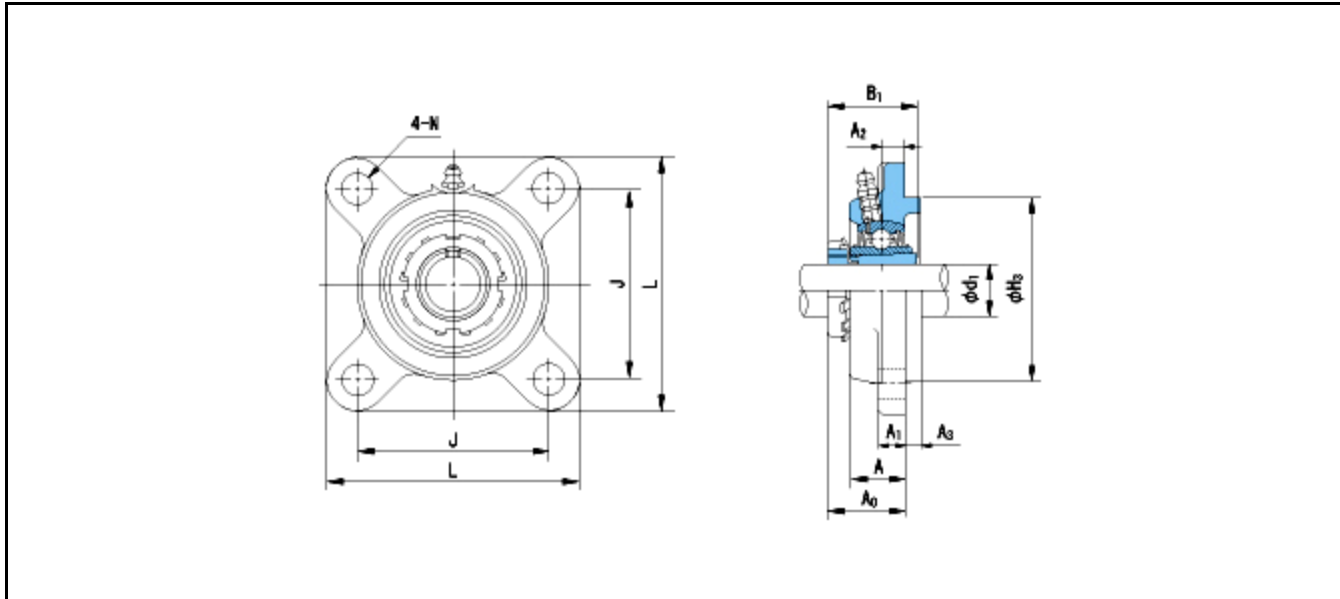
Bearing No. : **UKFS328+H2328**

Dimensions

L = 450

J = 350

N = 41



Dimensions

d1 = 125

A1 = 55

A2 = 45

B1 = 131

H3 = 400

A = 95

A0 = 118

Mass = 96.6 kg

Basic Dynamic Load Rating Cr : **255000 N**

Basic Static Load Rating Cor : **246000 N**

Limiting Speed ;

Grease Lubrication : - rpm

Oil Lubrication : - rpm

INNER RING OUTER RING

O.D.Surface Runout with Side : -

Axial Runout with Bore : -

Axial Runout with Raceway : -

Width Variation : -

Radial Runout : -