

ROECO

Bearing Data

Ball Bearing Units

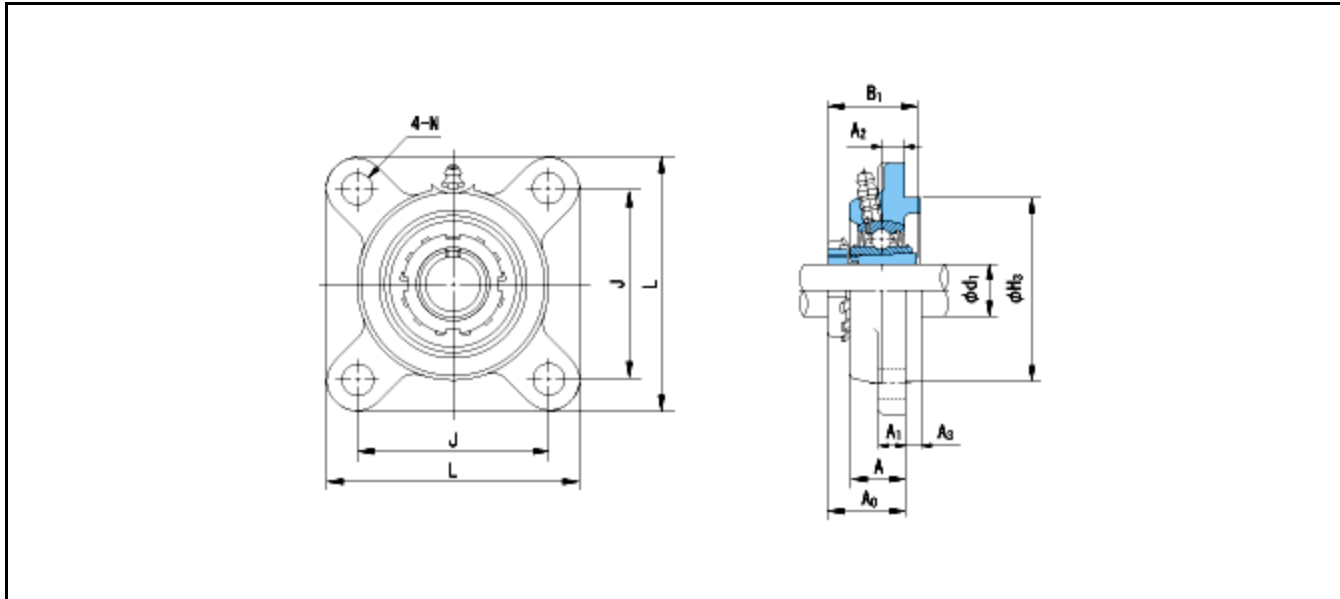
Bearing No. : **UKFS308+H2308**

Dimensions

L = 150

J = 112

N = 19



Dimensions

d1 = 35

A1 = 17

A2 = 13

B1 = 46

H3 = 115

A = 30

A0 = 40

Mass = 3.3 kg

Basic Dynamic Load Rating Cr :	40500 N				
Basic Static Load Rating Cor :	23900 N	O.D.Surface Runout with Side :			-
Limiting Speed ;		Axial Runout with Bore :			-
Grease Lubrication :	- rpm	Axial Runout with Raceway :			-
Oil Lubrication :	- rpm	Width Variation :			-
		Radial Runout :			-