

ROECO

Bearing Data

Ball Bearing Units

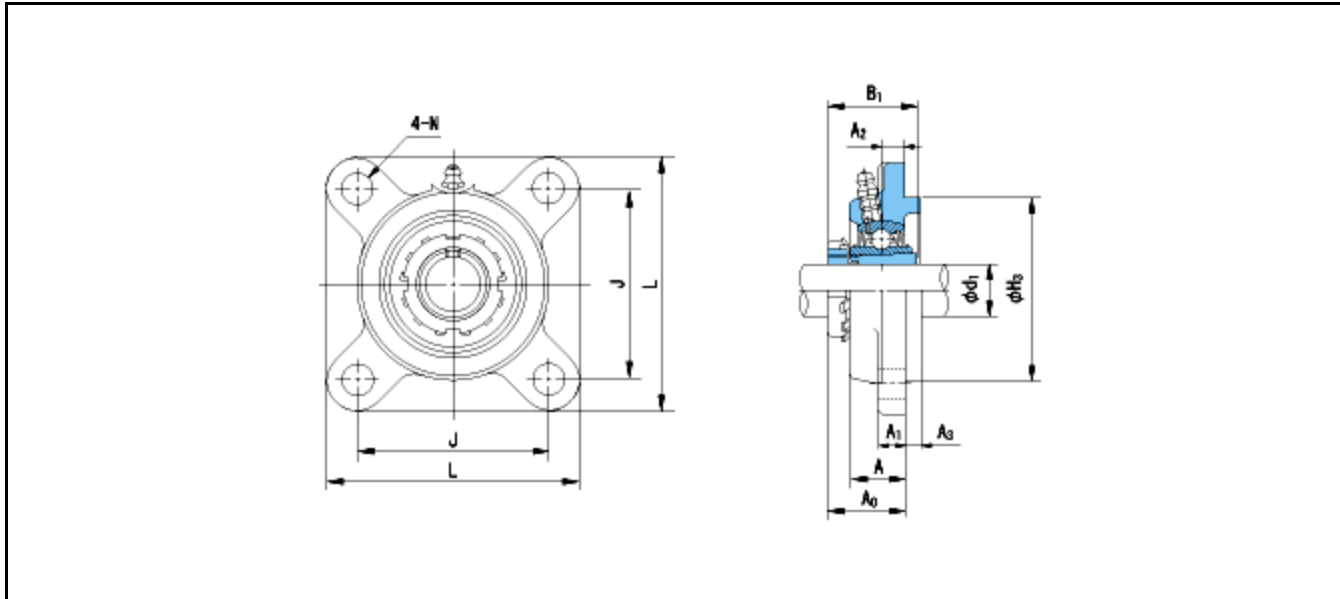
Bearing No. : **UKFS305+H2305**

Dimensions

L = 110

J = 80

N = 16



Dimensions

d1 = 20

A1 = 13

A2 = 9

B1 = 35

H3 = 80

A = 22

A0 = 30

Mass = 1.4 kg

Basic Dynamic Load Rating Cr :	21300 N				
Basic Static Load Rating Cor :	10900 N	O.D.Surface Runout with Side :			-
Limiting Speed ;		Axial Runout with Bore :			-
Grease Lubrication :	- rpm	Axial Runout with Raceway :			-
Oil Lubrication :	- rpm	Width Variation :			-
		Radial Runout :			-