

ROECO

Bearing Data

Ball Bearing Units

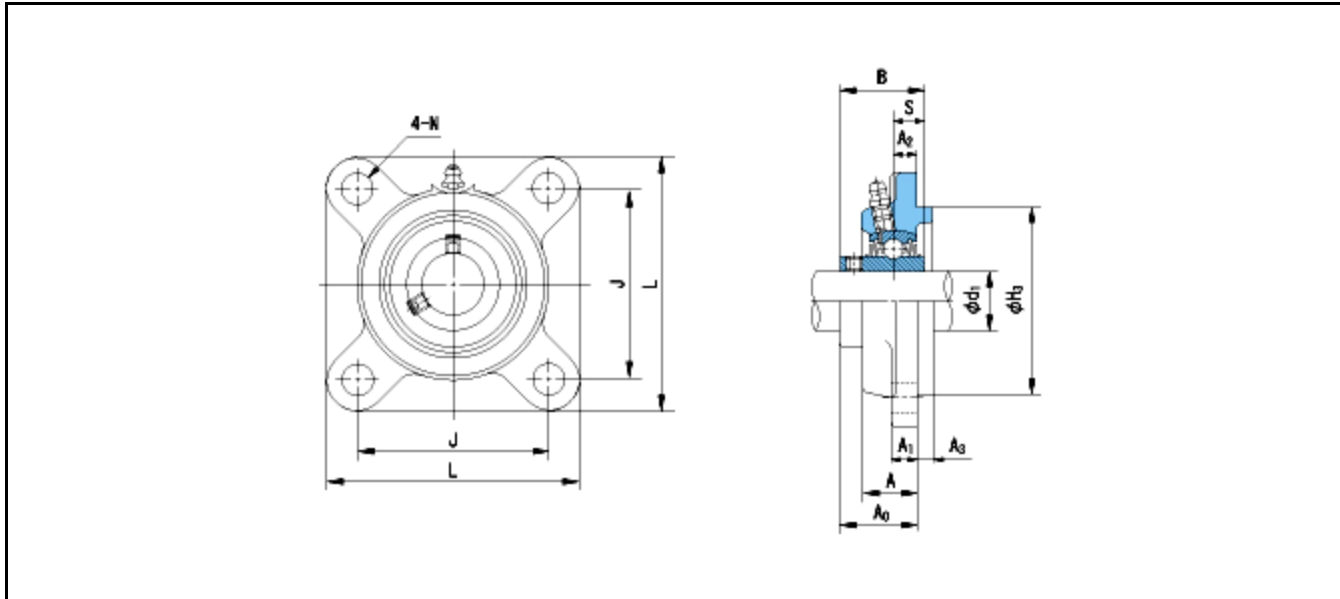
Bearing No. : **UCFS318**

Dimensions

L = 280

J = 216

N = 35



Dimensions

d1 = 90

A1 = 30

A2 = 24

H3 = 240

B = 96

S = 40

A = 56

A0 = 80

Mass = 20.4 kg

Basic Dynamic Load Rating Cr :	143000 N		
Basic Static Load Rating Cor :	107200 N	O.D.Surface Runout with Side :	-
Limiting Speed ;		Axial Runout with Bore :	-
Grease Lubrication :	- rpm	Axial Runout with Raceway :	-
Oil Lubrication :	- rpm	Width Variation :	-
		Radial Runout :	-