

ROECO

# Bearing Data

## Ball Bearing Units

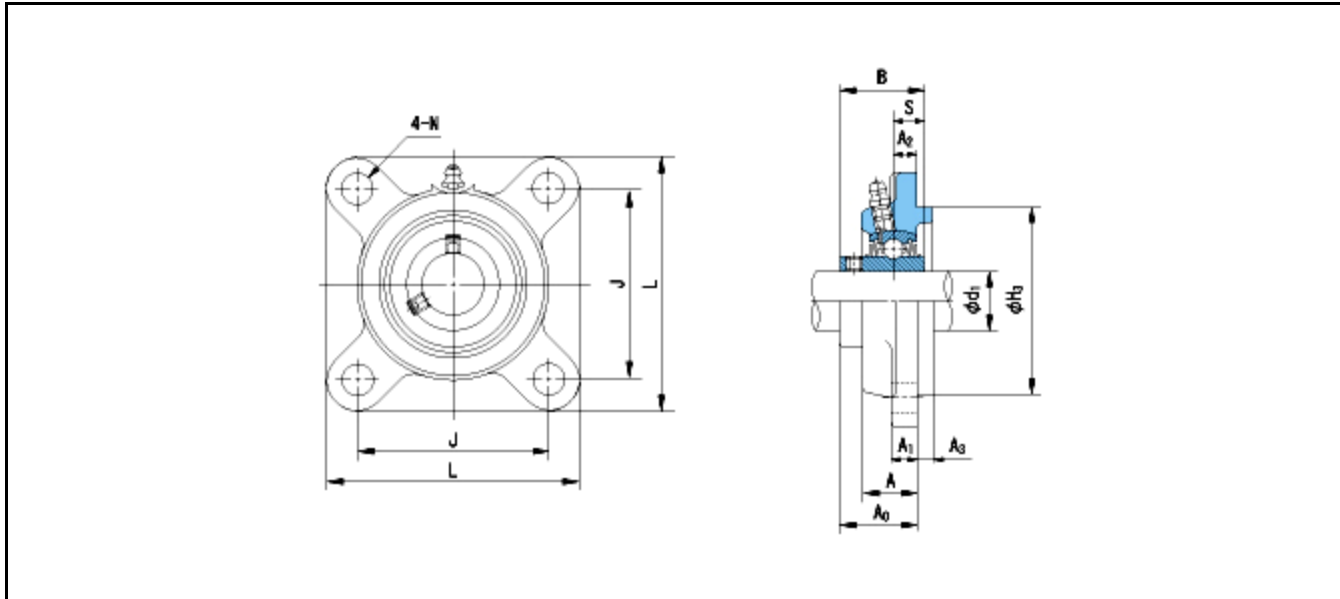
Bearing No. : **UCFS316**

Dimensions

L = 250

J = 196

N = 31



Dimensions

d1 = 80

A1 = 27

A2 = 18

H3 = 210

B = 86

S = 34

A = 48

A0 = 70

Mass = 14.3 kg

Basic Dynamic Load Rating Cr :	<b>123000 N</b>		
Basic Static Load Rating Cor :	<b>86400 N</b>	O.D.Surface Runout with Side :	-
Limiting Speed ;		Axial Runout with Bore :	-
Grease Lubrication :	- rpm	Axial Runout with Raceway :	-
Oil Lubrication :	- rpm	Width Variation :	-
		Radial Runout :	-