

ROECO

Bearing Data

Ball Bearing Units

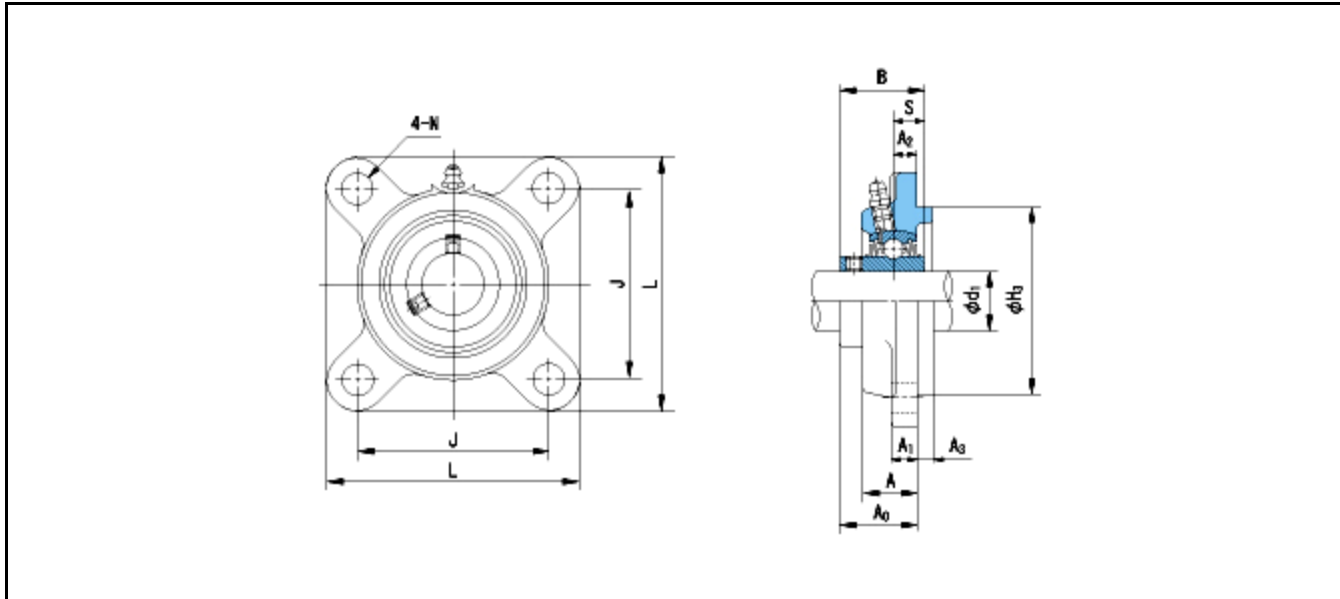
Bearing No. : **UCFS306**

Dimensions

L = 125

J = 95

N = 16



Dimensions

d1 = 30

A1 = 15

A2 = 10

H3 = 90

B = 43

S = 17

A = 24

A0 = 36

Mass = 1.9 kg

Basic Dynamic Load Rating Cr :	26800 N		
Basic Static Load Rating Cor :	15000 N	O.D.Surface Runout with Side :	-
Limiting Speed ;		Axial Runout with Bore :	-
Grease Lubrication :	- rpm	Axial Runout with Raceway :	-
Oil Lubrication :	- rpm	Width Variation :	-
		Radial Runout :	-