

ROECO

Bearing Data

Ball Bearing Units

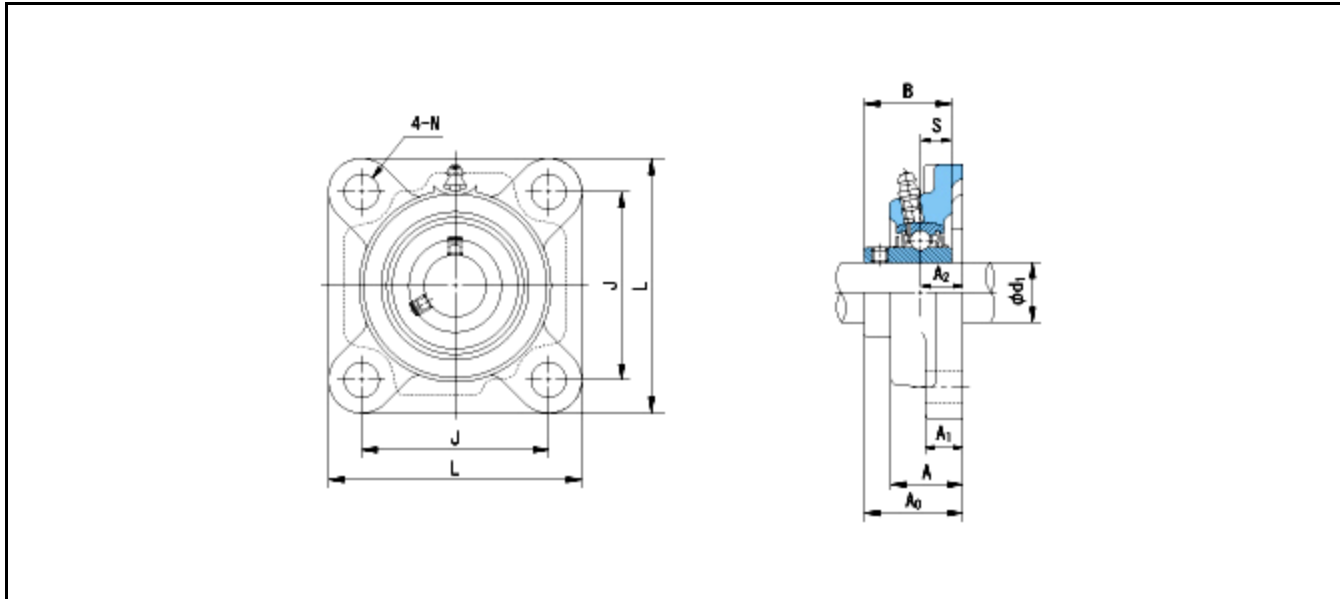
Bearing No. : **UCF312**

Dimensions

L = 195

J = 150

N = 23



Dimensions

d1 = 60

A1 = 22

A2 = 33

B = 71

S = 26

A = 56

A0 = 78

Mass = 6.8 kg

Basic Dynamic Load Rating Cr :	81500 N				
Basic Static Load Rating Cor :	52000 N	O.D.Surface Runout with Side :			-
Limiting Speed ;		Axial Runout with Bore :			-
Grease Lubrication :	- rpm	Axial Runout with Raceway :			-
Oil Lubrication :	- rpm	Width Variation :			-
		Radial Runout :			-