

ROECO

# Bearing Data

## Ball Bearing Units

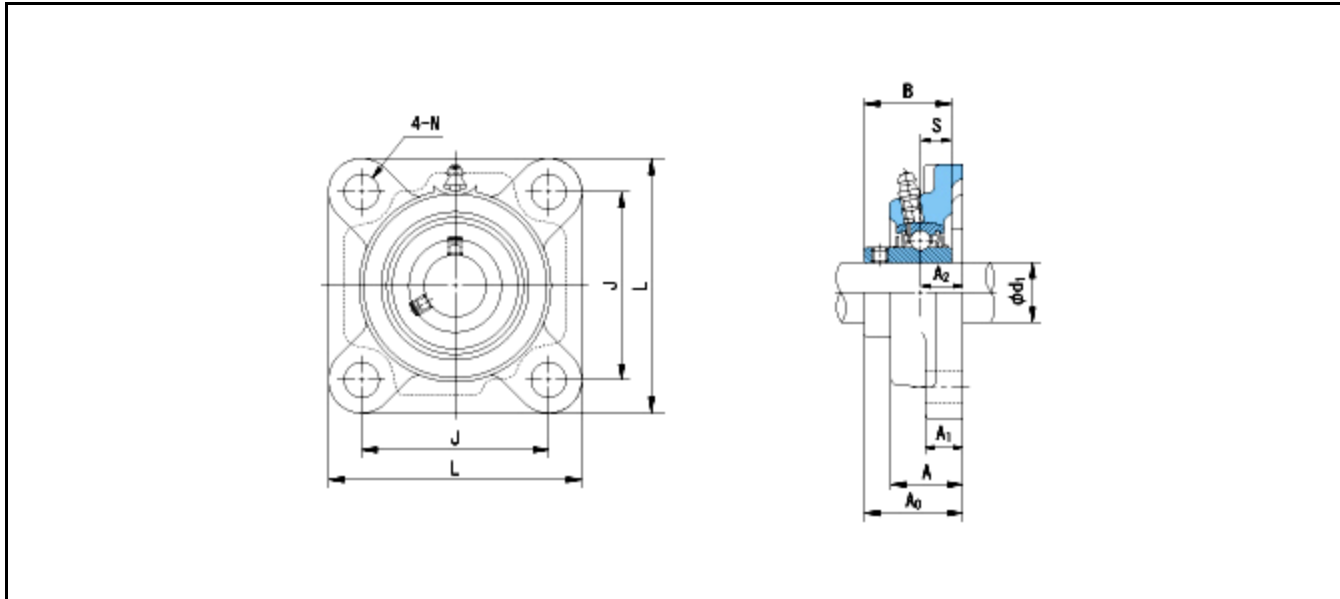
Bearing No. : **UCF305**

Dimensions

L = 110

J = 80

N = 16



Dimensions

d1 = 25

A1 = 13

A2 = 16

B = 38

S = 15

A = 29

A0 = 39

Mass = 1.2 kg

Basic Dynamic Load Rating Cr :	<b>21300 N</b>				
Basic Static Load Rating Cor :	<b>10900 N</b>	O.D.Surface Runout with Side :			-
Limiting Speed ;		Axial Runout with Bore :			-
Grease Lubrication :	- rpm	Axial Runout with Raceway :			-
Oil Lubrication :	- rpm	Width Variation :			-
		Radial Runout :			-