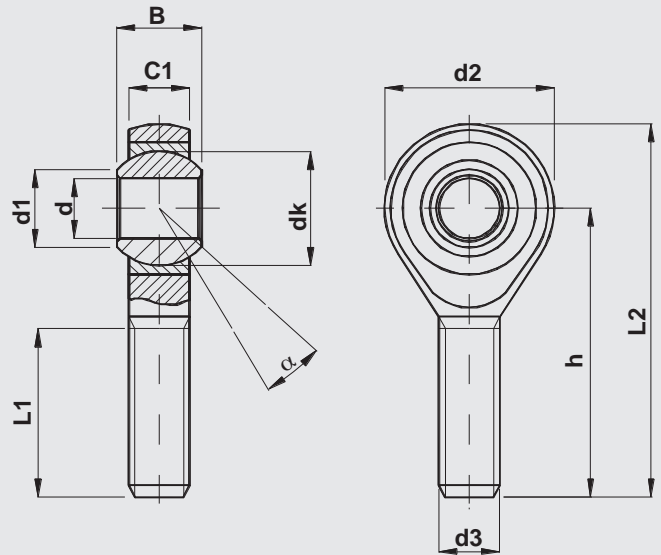


CM ok

DIN ISO 12240 - 4 Serie K male thread

Coupling: steel on steel self-lubricating



Body:

Up to dimension 12 automatic steel
 From dimension 14 forged hardening steel
 surface finish zinc plated and passivated

Outer race:

sintered steel, self-lubricating impregnated with oil

Ball:

bearing steel, hardened, grinded and polished

Designation	d	d3	B	C1	d1	d2	dk	h	L1	L2	max radial load Co. (daN)	α° angle \approx	weight \approx (kg)
	H9*	6g											
CM6 OK M6	6	M6	9	6,75	8,9	20	12,7	36	21	46	400	13	0,021
CM8 OK M8	8	M8	12	9	10,4	24	15,88	42	25	54	800	14	0,04
CM10 OK M10	10	M10	14	10,5	12,9	28	19,05	48	28	62	1300	13	0,064
CM12 OK M12	12	M12	16	12	15,4	32	22,23	54	32	70	1700	13	0,097
CM16 OK M16	16	M16	21	15	19,3	42	28,58	66	37	87	4800	15	0,195

* tolerance not included in DIN ISO 12240-4

For left-hand thread add L (example CML16 OK M16)

Technical reading from page 1 to page 7

Application: mechanical engineering