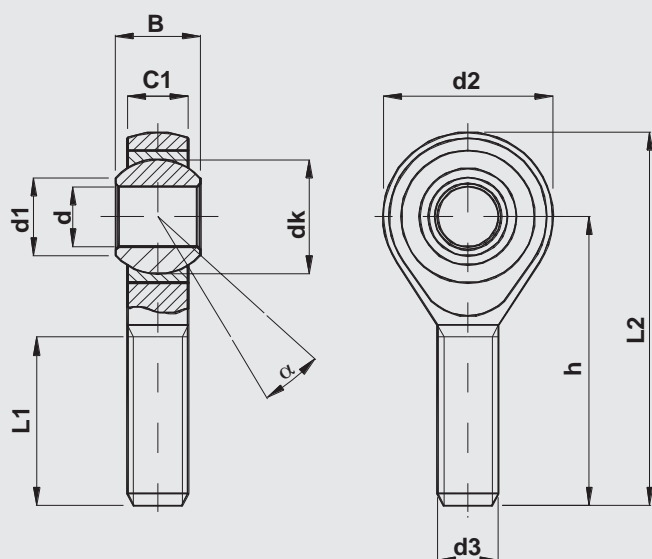


DIN ISO 12240 - 4 Serie K female thread

Coupling: steel on bronze self lubricating

CM



Body:
Up to dimension 12 automatic steel
From dimension 14 forged hardening steel
surface finish zinc plated and passivated

Outer race:
sintered bronze, self-lubricating impregnated with oil

Ball:
bearing steel, hardened, grinded and polished

Designation	d	d3	B	C1	d1	d2	dk	h	L1	L2	max radial load Co.(daN)	α° angle \approx	weight \approx (kg)
	H7	6g											
CM5 M5	5	M5	8	6	7,7	18	11,11	33	19	42	300	13	0,015
CM6 M6	6	M6	9	6,75	8,9	20	12,7	36	21	46	400	13	0,021
CM8 M8	8	M8	12	9	10,4	24	15,87	42	25	54	800	14	0,04
CM10 M10	10	M10	14	10,5	12,9	28	19,05	48	28	62	1300	13	0,064
CM12 M12	12	M12	16	12	15,4	32	22,22	54	32	70	1700	13	0,097
CM14 M14	14	M14	19	13,5	16,8	36	25,4	60	36	78	3600	15	0,13
CM16 M16	16	M16	21	15	19,3	42	28,57	66	37	87	4800	15	0,208
CM18 M18	18	M18x1,5	23	16,5	21,8	46	31,75	72	41	95	5100	15	0,260
CM20 M20	20	M20	25	19	24,3	50	34,52	78	45	103	5200	14	0,367
CM20 M20x1,5	20	M20x1,5	25	18	24,3	50	34,92	78	45	103	5200	14	0,367
CM22 M22	22	M22x1,5	28	20	25,8	54	38,10	84	48	112	7500	15	0,435
CM25 M25	25	M24x2	31	22	29,5	60	42,85	94	55	124	8500	15	0,590
CM30 M30	30	M30x2	37	25	34,8	70	50,80	110	66	145	10800	15	1,060

For left-hand thread add L (example CML8 M8)
Technical reading from page 1 to page 7

Application: precision engineering

UP TO DATE SERIES