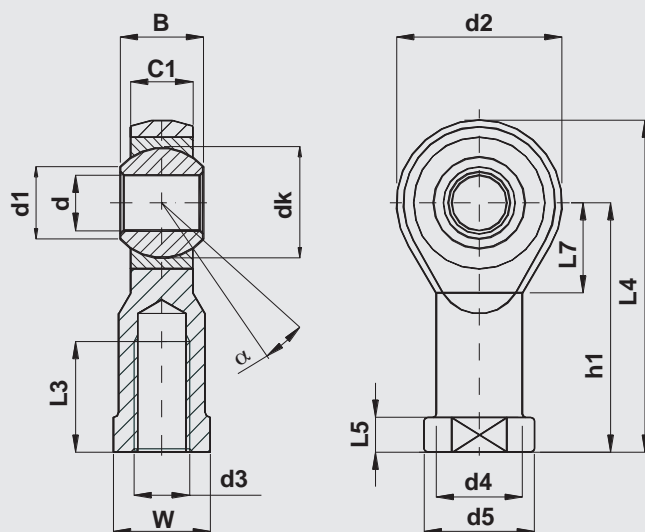


## DIN ISO 12240 - 4 Serie K thread ISO 8139 (GETOP) female thread

Coupling: steel on steel self-lubricating

**CF** ok



**Body:**

Up to dimension 12 automatic steel  
From dimension 14 forged hardening steel  
surface finish zinc plated and passivated

**Outer race:**

sintered steel, self-lubricating impregnated with oil

**Ball:**

bearing steel, hardened, grinded and polished

Designation	Cylinder	d	d3	B	C1	d1	d2	d4	d5	dk	h1	L3	L4	L5	L7	W	max radial load Co.(daN)	$\alpha^\circ$ angle $\approx$	weight $\approx$ (kg)
CF6 OK M6	12-16	6	M6	9	6,75	8,9	20	10	13	12,7	30	12	40	5	11	11	700	13	0,025
CF8 OK M8	20	8	M8	12	9	10,4	24	12,5	16	15,9	36	16	48	5	13	14	1200	14	0,046
CF10 OK M10x1,25	25-32	10	M10x1,25	14	10,5	12,9	28	15	19	19,1	43	20	57	6,5	15	17	1400	13	0,075
CF12 OK M12x1,25	40-50	12	M12x1,25	16	12	15,4	32	17,5	22	22,2	50	22	66	6,5	17	19	1900	13	0,112
CF16 OK M16x1,5	50-63	16	M16x1,5	21	15	19,3	42	22	27	28,6	64	28	85	8	23	22	4800	15	0,222

\* tolerance not included in DIN ISO 12240-4

For left-hand thread add L (example CFL16 OK M16x1,5)

Technical reading from page 1 to page 7

Application: mechanical engineering