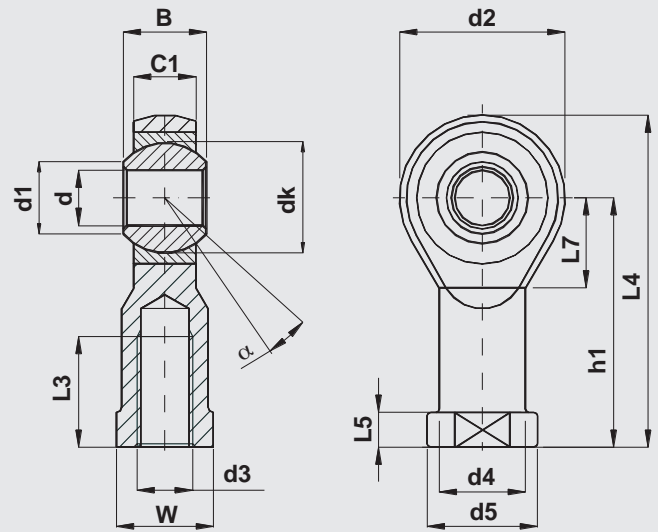


CF

DIN ISO 12240 - 4 Serie K female thread

Coupling: steel on bronze self-lubricating



Body:

Up to dimension 12 automatic steel
From dimension 14 forged hardening steel
surface finish zinc plated and passivated

Outer race:

sintered bronze, self-lubricating impregnated with oil

Ball:

bearing steel, hardened, grinded and polished

Designation	d	d3	B	C1	d1	d2	d4	d5	dk	h1	L3	L4	L5	L7	W	max radial load Co.(daN)	α° angle ≈	weight ≈ (kg)
	H7	6H																
CF5 M5	5	M5	8	6	7,7	18	9	11	11,11	27	10	36	4	10	9	600	13	0,019
CF6 M6	6	M6	9	6,75	8,9	20	10	13	12,7	30	12	40	5	11	11	700	13	0,026
CF8 M8	8	M8	12	9	10,4	24	12,5	16	15,87	36	16	48	5	13	14	1200	14	0,046
CF10 M10	10	M10	14	10,5	12,9	28	15	19	19,05	43	20	57	6,5	15	17	1400	13	0,074
CF12 M12	12	M12	16	12	15,4	32	17,5	22	22,22	50	22	66	6,5	17	19	1900	13	0,111
CF14 M14	14	M14	19	13,5	16,8	36	20	25	25,4	57	25	75	8	19	22	3600	15	0,156
CF16 M16	16	M16	21	15	19,3	42	22	27	28,57	64	28	85	8	23	22	4800	15	0,231
CF18 M18	18	M18x1,5	23	16,5	21,8	46	25	31	31,75	71	32	94	10	25	27	5100	15	0,295
CF20 M20	20	M20	25	18	24,3	50	27,5	34	34,92	77	33	102	10	27	30	5200	14	0,402
CF22 M22	22	M22x1,5	28	20	25,8	54	30	37	38,10	84	37	111	12	29	32	7500	15	0,490
CF25 M25	25	M24x2	31	22	29,5	60	33,5	42	42,85	94	42	124	12	32	36	8500	15	0,650
CF30 M30x2	30	M30x2	37	25	34,8	70	40	50	50,8	110	51	145	15	36	41	10800	17	1,126
CF35 M36x2	35	M36x2	43*	28	37,7*	80	46	58*	57,15	125	56	165	17,0*	41	50	12400	19*	1,635

* not included in DIN ISO 12240-4

For left-hand thread add L (example CFL8 M8) - Technical reading from page 1 to page 7

Application: precision engineering

UP TO DATE SERIES