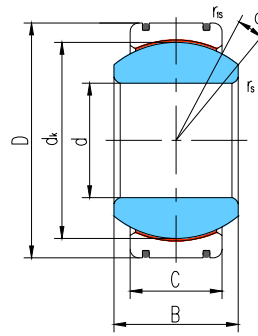
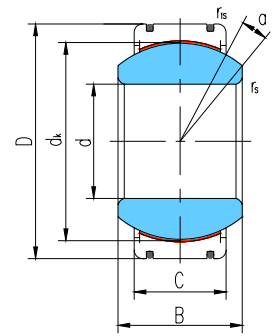


滑动摩擦副：钢 / PTFE 编织物

Sliding contact surfaces: Steel / PTFE fabric



GE...XT/X



GE...XT-2RS/X

轴承 型号 Bearing number		外形尺寸 Dimensions mm								额定载荷 Load ratings kN		重量 Weight ≈kg
		d	D	B	C	dk	rs min	r1s min	α° ≈	动载荷 Dynamic	静载荷 Static	
GE70XT/X	GE70XT-2RS/X	70	105	49	40	92	1	1	6	550	1100	1.55
GE80XT/X	GE80XT-2RS/X	80	120	55	45	105	1	1	6	705	1410	2.31
GE90XT/X	GE90XT-2RS/X	90	130	60	50	115	1	1	5	860	1720	2.75
GE100XT/X	GE100XT-2RS/X	100	150	70	55	130	1	1	7	1070	2140	4.45
GE110XT/X	GE110XT-2RS/X	110	160	70	55	140	1	1	6	1150	2300	4.82
GE120XT/X	GE120XT-2RS/X	120	180	85	70	160	1	1	6	1680	3360	8.05
GE140XT/X	GE140XT-2RS/X	140	210	90	70	180	1	1	7	1890	3780	11.02
GE160XT/X	GE160XT-2RS/X	160	230	105	80	200	1	1	8	2400	4800	14.01
GE180XT/X	GE180XT-2RS/X	180	260	105	80	225	1.1	1.1	6	2700	5400	18.65
GE200XT/X	GE200XT-2RS/X	200	290	130	100	250	1.1	1.1	7	3750	7500	28.03