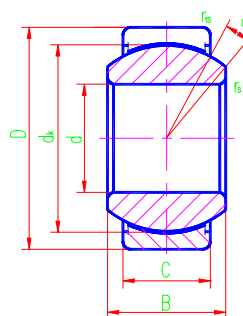




# Radial Spherical Plain Bearings

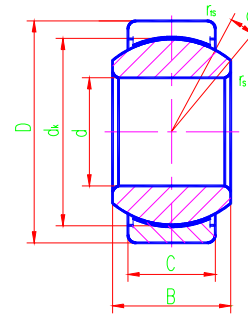


Sliding contact surfaces: Steel / PTFE fabric

Bearing number	Dimensions				mm/inch				Load ratings kN		Weight ≈ kg
	d	D	B	C	dk	rs min	r1s min	α° ≈	Dynamic	Static	
GEZ19ET-2RS	19.050	31.750	16.662	14.275	27.5	0.3	0.6	6	45	92	0.053
	0.75	1.25	0.656	0.562	1.081	0.012	0.024				
GEZ22ET-2RS	22.225	36.513	19.431	16.662	32	0.3	0.6	6	62	124	0.085
	0.875	1.4375	0.756	0.656	1.258	0.012	0.024				
GEZ25ET-2RS	25.400	41.275	22.225	19.050	36.5	0.3	0.6	6	81	163	0.121
	1	1.625	0.875	0.75	1.437	0.012	0.024				
GEZ31ET-2RS	31.750	50.800	27.762	23.800	45.5	0.6	0.6	6	130	262	0.23
	1.25	2	1.093	0.937	1.788	0.024	0.024				
GEZ34ET-2RS	34.925	55.563	30.150	26.187	49	0.6	1	6	154	310	0.35
	1.375	2.1875	1.187	1.031	1.926	0.024	0.04				
GEZ38ET-2RS	38.100	61.913	33.325	28.575	54.7	0.6	1	6	181	366	0.42
	1.5	2.4375	1.312	1.125	2.154	0.024	0.04				
GEZ44ET-2RS	44.450	71.438	38.887	33.325	63.9	0.6	1	6	255	515	0.64
	1.75	2.8125	1.531	1.312	2.511	0.024	0.04				
GEZ50ET-2RS	50.800	80.963	44.450	38.100	73	0.6	1	6	334	670	0.93
	2	3.1875	1.75	1.5	2.869	0.024	0.04				
GEZ57ET-2RS	57.150	90.488	50.013	42.850	82	0.6	1	6	421	850	1.3
	2.25	3.5625	1.969	1.687	3.223	0.024	0.04				
GEZ63ET-2RS	63.500	100.013	55.550	47.625	92	1	1	6	525	1060	1.85
	2.5	3.9375	2.187	1.875	3.616	0.04	0.04				
GEZ69ET-2RS	69.850	111.125	61.112	52.375	100	1	1	6	628	1267	2.4
	2.75	4.375	2.406	2.062	3.937	0.04	0.04				
GEZ76ET-2RS	76.200	120.650	66.675	57.150	109.5	1	1	6	751	1514	3.1
	3	4.75	2.625	2.25	4.303	0.04	0.04				
GEZ82ET-2RS	82.550	130.175	72.238	61.900	119	1	1	6	884	1780	3.8
	3.25	5.125	2.844	2.437	4.685	0.04	0.04				
GEZ88ET-2RS	88.900	139.700	77.775	66.675	128	1	1	6	1024	2065	4.8
	3.5	5.5	3.062	2.625	5.04	0.04	0.04				
GEZ95ET-2RS	95.250	149.225	83.337	71.425	137	1	1	6	1170	2368	5.8
	3.75	5.875	3.281	2.812	5.393	0.04	0.04				
GEZ101ET-2RS	101.600	158.750	88.900	76.200	146	1	1	6	1335	2690	7
	4	6.25	3.5	3	5.748	0.04	0.04				



## Radial Spherical Plain Bearings



Sliding contact surfaces: Steel / PTFE fabric

Bearing number	Dimensions								Load ratings kN		Weight ≈ kg
	d	D	B	C	d <sub>k</sub>	r <sub>s</sub> min	r <sub>1s</sub> min	α° ≈	Dynamic	Static	
GEZ107ET-2RS	107.950	168.275	94.463	80.950	155	1	1	6	1500	3030	8.41
	4.25	6.625	3.719	3.187	6.102	0.04	0.04				
GEZ114ET-2RS	114.300	177.800	100.013	85.725	164.5	1	1	6	1690	3400	9.8
	4.5	7	3.937	3.375	6.476	0.04	0.04				
GEZ120ET-2RS	120.650	187.325	105.562	90.475	173.5	1	1	6	1880	3790	11.5
	4.75	7.375	4.156	3.562	6.83	0.04	0.04				
GEZ127ET-2RS	127.000	196.850	111.125	95.250	183	1	1	6	2090	4210	13.5
	5	7.75	4.375	3.75	7.204	0.04	0.04				
GEZ152ET-2RS	152.400	222.250	120.65	104.775	207	1	1	5	2600	5240	17.5
	6	8.75	4.75	4.125	8.15	0.04	0.04				