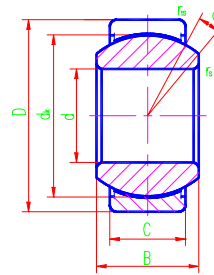




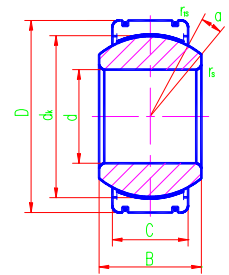
Radial Spherical Plain Bearings



Sliding contact surfaces: Steel / PTFE fabric



GEG...ET-2RS



GEG...XT-2RS

Bearing number	Dimensions mm								Load ratings kN		Weight ≈ kg
	d	D	B	C	dk	rs min	rs min	α° ≈	Dynamic	Static	
GEG15ET-2RS	15	30	16	10	25	0.3	0.3	16	30	60	0.049
GEG17ET-2RS	17	35	20	12	29	0.3	0.3	19	42	83	0.083
GEG20ET-2RS	20	42	25	16	35.5	0.3	0.6	17	68	137	0.153
GEG25ET-2RS	25	47	28	18	40.7	0.6	0.6	17	88	176	0.203
GEG30ET-2RS	30	55	32	20	47	0.6	1	17	112	224	0.304
GEG35ET-2RS	35	62	35	22	53	0.6	1	16	140	280	0.408
GEG40ET-2RS	40	68	40	25	60	0.6	1	17	180	360	0.542
GEG45ET-2RS	45	75	43	28	66	0.6	1	15	220	440	0.713
GEG50ET-2RS	50	90	56	36	80	0.6	1	17	345	695	1.14
GEG60ET-2RS	60	105	63	40	92	1	1	17	440	880	2.05
GEG70ET-2RS	70	120	70	45	105	1	1	16	567	1140	3.01
GEG80ET-2RS	80	130	75	50	115	1	1	14	690	1370	3.64
GEG90ET-2RS	90	150	85	55	130	1	1	15	858	1730	5.22
GEG100ET-2RS	100	160	85	55	140	1	1	14	924	1860	6.05
GEG110ET-2RS	110	180	100	70	160	1	1	12	1340	2700	9.68
GEG120XT-2RS	120	210	115	70	180	1	1	16	1500	3000	14.01
GEG140XT-2RS	140	230	130	80	200	1	1	16	1920	3800	19.01
GEG160XT-2RS	160	260	135	80	225	1.1	1.1	16	2160	4300	20.02
GEG180XT-2RS	180	290	155	100	250	1.1	1.1	14	3000	6000	32.21
GEG200XT-2RS	200	320	165	100	275	1.1	1.1	15	3300	6550	45.28
GEG220XT-2RS	220	340	175	100	300	1.1	1.1	16	3600	7200	51.12
GEG240XT-2RS	240	370	190	110	325	1.1	1.1	15	4290	8650	65.12
GEG260XT-2RS	260	400	205	120	350	1.1	1.1	15	5000	10000	82.44
GEG280XT-2RS	280	430	210	120	375	1.1	1.1	15	5400	10800	97.21