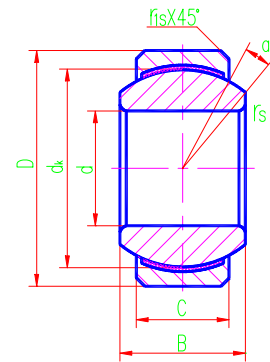




# Radial Spherical Plain Bearings



PTFE

Sliding contact surfaces Steel PTFE composite material

Bearing number	Dimensions mm/inch								Load ratings kN		Weight ≈kg
	d	D	B	C	dk	r <sub>s</sub> min	r <sub>1s</sub> min	α° ≈	Dynamic	Static	
GEFZ4C	4.83	14.29	7.14	5.54	10.31	0.3	0.38	11	5.1	12.8	0.006
	0.19	0.5625	0.281	0.218	0.406	0.012	0.015				
GEFZ6C	6.35	16.67	8.71	6.35	12.70	0.3	0.56	13.5	7.2	18.4	0.010
	0.25	0.6562	0.343	0.25	0.5	0.012	0.022				
GEFZ7C	7.94	19.05	9.53	7.14	14.27	0.3	0.81	12	9.1	22.9	0.014
	0.3125	0.75	0.375	0.281	0.562	0.012	0.032				
GEFZ9C	9.53	20.64	10.31	7.92	16.66	0.3	0.81	10	11.8	29.6	0.017
	0.375	0.8125	0.406	0.312	0.656	0.012	0.032				
GEFZ11C	11.11	23.02	11.10	8.71	17.45	0.3	0.81	8	13.6	34.1	0.021
	0.4375	0.9062	0.437	0.343	0.687	0.012	0.032				
GEFZ12C	12.70	25.40	12.70	9.91	20.65	0.3	0.81	9.5	18.4	46	0.029
	0.5	1	0.5	0.39	0.813	0.012	0.032				
GEFZ14C	14.29	27.78	14.27	11.10	23.01	0.3	0.81	9.5	23	57.4	0.039
	0.5625	1.0937	0.562	0.437	0.906	0.012	0.032				
GEFZ15C	15.88	30.16	15.88	12.70	25.40	0.3	0.81	9.5	29	72.5	0.050
	0.625	1.1875	0.625	0.5	1	0.012	0.032				
GEFZ19C	19.05	36.51	19.05	15.06	30.15	0.3	1.12	9	40.8	102.1	0.093
	0.75	1.4375	0.75	0.593	1.187	0.012	0.044				
GEFZ22C	22.23	39.69	22.23	17.86	33.32	0.6	1.12	9.5	53.5	133.8	0.119
	0.875	1.5625	0.703	0.875	1.312	0.024	0.044				
GEFZ25C	25.40	44.45	25.40	20.24	38.10	0.6	1.12	10	69.4	173.5	0.175
	1	1.75	1	0.797	1.5	0.024	0.044				