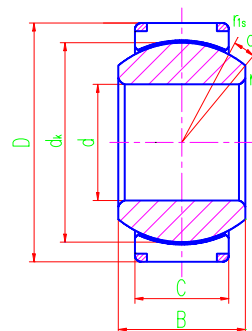




Radial Spherical Plain Bearings



Sliding contact surfaces: Steel / PTFE fabric

Bearing number	Dimensions mm								Load ratings kN		Weight ≈kg
	d	D	B	C	dk	rs min	rs min	α° ≈	Dynamic	Static	
GEC320XT	320	440	160	135	380	1.1	3	3	6150	12400	76
GEC340XT	340	460	160	135	400	1.1	3	3	6480	13000	80
GEC360XT	360	480	160	135	420	1.1	4	3	7080	14700	86
GEC380XT	380	520	190	160	450	1.5	4	4	9000	18700	125
GEC400XT	400	540	190	160	470	1.5	4	4	9400	19600	130
GEC420XT	420	560	190	160	490	1.5	4	4	9800	20400	145
GEC440XT	440	600	218	185	520	1.5	4	3	12000	25000	190