

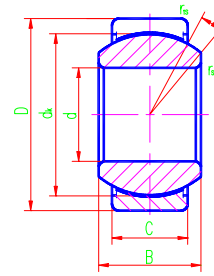


Radial Spherical Plain Bearings

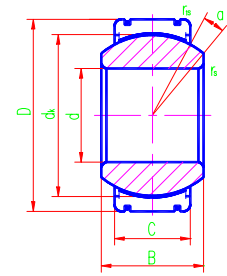


PTFE

Sliding contact surfaces Steel PTFE fabric



GE...ET-2RS



GE...XT-2RS

Bearing number	Dimensions mm								Load ratings kN		Weight ≈ kg
	d	D	B	C	dk	rs min	r1s min	$\alpha^\circ \approx$	Dynamic	Static	
GE15ET-2RS	15	26	12	9	22	0.3	0.3	8	23	47	0.027
GE17ET-2RS	17	30	14	10	25	0.3	0.3	10	30	60	0.041
GE20ET-2RS	20	35	16	12	29	0.3	0.3	9	42	83	0.066
GE25ET-2RS	25	42	20	16	35.5	0.6	0.6	7	68	137	0.119
GE30ET-2RS	30	47	22	18	40.7	0.6	0.6	6	88	176	0.153
GE35ET-2RS	35	55	25	20	47	0.6	1	6	112	224	0.233
GE40ET-2RS	40	62	28	22	53	0.6	1	7	140	280	0.306
GE45ET-2RS	45	68	32	25	60	0.6	1	7	180	360	0.427
GE50ET-2RS	50	75	35	28	66	0.6	1	6	220	440	0.546
GE55ET-2RS	55	85	40	32	74	0.6	1	7	284	573	0.939
GE60ET-2RS	60	90	44	36	80	1	1	6	345	695	1.04
GE70ET-2RS	70	105	49	40	92	1	1	6	440	880	1.55
GE80ET-2RS	80	120	55	45	105	1	1	6	567	1140	2.31
GE90ET-2RS	90	130	60	50	115	1	1	5	690	1370	2.75
GE100ET-2RS	100	150	70	55	130	1	1	7	858	1730	4.45
GE110ET-2RS	110	160	70	55	140	1	1	6	924	1860	4.82
GE120ET-2RS	120	180	85	70	160	1	1	6	1340	2700	8.05
GE140XT-2RS	140	210	90	70	180	1	1	7	1500	3000	11.02
GE160XT-2RS	160	230	105	80	200	1	1	8	1920	3800	14.01
GE180XT-2RS	180	260	105	80	225	1.1	1.1	6	2160	4300	18.65
GE200XT-2RS	200	290	130	100	250	1.1	1.1	7	3000	6000	28.03
GE220XT-2RS	220	320	135	100	275	1.1	1.1	8	3300	6550	35.51
GE240XT-2RS	240	340	140	100	300	1.1	1.1	8	3600	7200	39.91
GE260XT-2RS	260	370	150	110	325	1.1	1.1	7	4290	8650	51.54
GE280XT-2RS	280	400	155	120	350	1.1	1.1	6	5000	10000	65.06
GE300XT-2RS	300	430	165	120	375	1.1	1.1	7	5400	10800	78.07