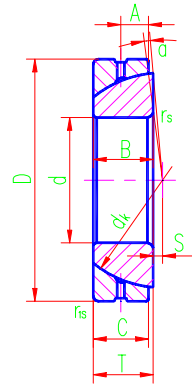
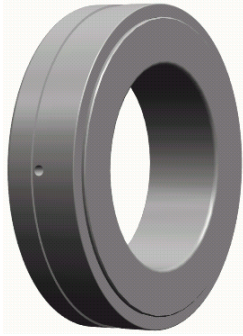




Angular Contact Spherical Plain Bearings



Sliding contact surfaces Steel Steel

Bearing number	Dimensions mm										Load ratings kN		Weight ≈kg
	d	D	B	C	T	dk	S	A	rs, rls min	α° ≈	Dynamic	Static	
GAC25S	25	47	15	14	15	42	0.6	7.5	1	3.5	50	250	0.148
GAC28S	28	52	16	15	16	47	1	8	1	3	60	300	0.186
GAC30S	30	55	17	15	17	49.5	1.3	8.5	1	3	63	315	0.208
GAC32S	32	58	17	16	17	52	2	8.5	1	3	71	354	0.241
GAC35S	35	62	18	16	18	55.5	2.1	9	1	3	78	390	0.268
GAC40S	40	68	19	17	19	62	2.8	9.5	1	3	92	463	0.327
GAC45S	45	75	20	18	20	68.5	3.5	10	1	3	108	540	0.416
GAC50S	50	80	20	19	20	74	4.3	10	1	3	123	618	0.455
GAC55S	55	90	23	20	23	82	5	11.5	1.1	3	144	721	0.645
GAC60S	60	95	23	21	23	88.5	5.7	11.5	1.1	3	163	817	0.714
GAC65S	65	100	23	22	23	93.5	6.5	11.5	1.1	2.5	180	905	0.759
GAC70S	70	110	25	23	25	102	7.2	12.5	1.1	2.5	206	1030	1.04
GAC75S	75	115	25	24	25	107	7.9	12.5	1.1	2.5	220	1129	1.12
GAC80S	80	125	29	25.5	29	115	8.6	14.5	1.1	2.5	258	1290	1.54
GAC85S	85	130	29	26.5	29	122	9.4	14.5	1.1	2.5	284	1422	1.61
GAC90S	90	140	32	28	32	128.5	10.1	16	1.5	2.5	316	1580	2.09
GAC95S	95	145	32	29.5	32	135	10.8	16	1.5	2.5	350	1750	2.22
GAC100S	100	150	32	31	32	141	11.6	16	1.5	2	384	1923	2.34
GAC105S	105	160	35	32.5	35	148	12.3	17.5	2	2	423	2116	2.93
GAC110S	110	170	38	34	38	155	13	19	2	2	463	2318	3.68
GAC120S	120	180	38	37	38	168	14.5	19	2	2	547	2735	3.97
GAC130S	130	200	45	43	45	188	18	19	2.5	1	710	3550	5.92
GAC140S	140	210	45	43	45	198	19	19	2.5	1	740	3740	6.33
GAC150S	150	225	48	46	48	211	20	20.5	3	1	850	4270	8.01
GAC160S	160	240	51	49	51	225	20	22	3	1	970	4850	9.42
GAC170S	170	260	57	55	57	246	21	27	3	1	1190	5950	12.3
GAC180S	180	280	64	61	64	260	21	28	3	1	1395	6970	17.4
GAC190S	190	290	64	62	64	275	26	30	3	1.5	1500	7500	18.2
GAC200S	200	310	70	66	70	290	26	30	3	1	1680	8420	22.5

