

ROECO

Bearing Data

Ball Bearing Units

Bearing No. : **CUCF311CE**

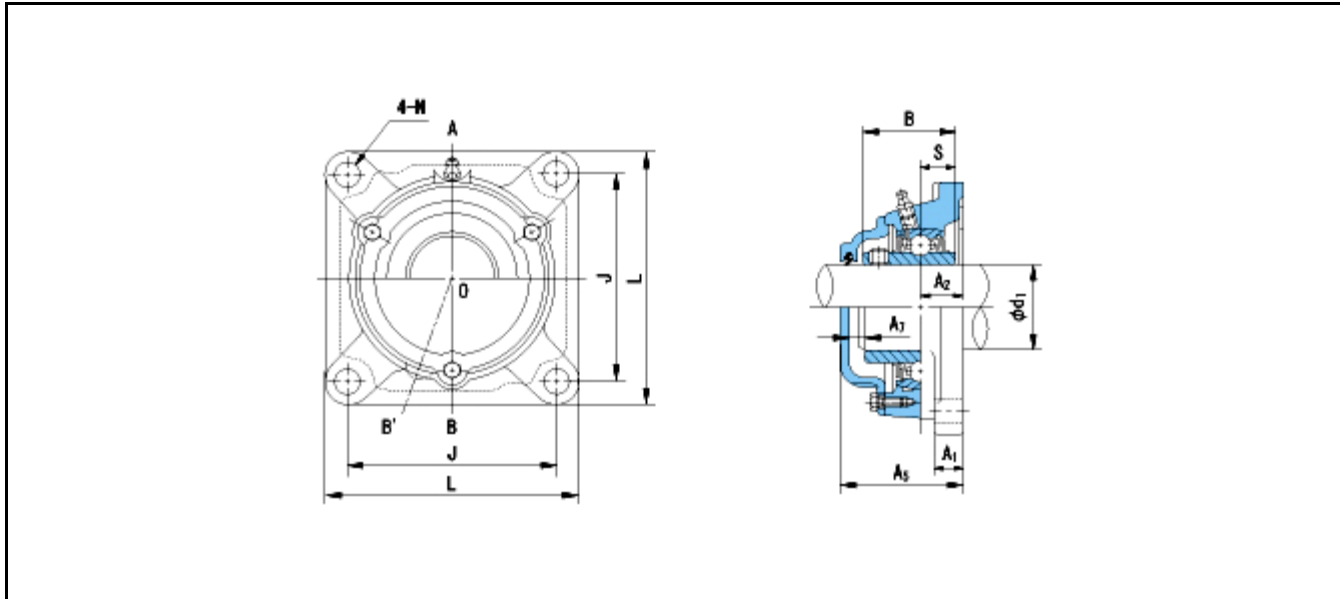
Dimensions

L = 185

J = 140

N = 23

A = 52



Dimensions

d1 = 55

A1 = 20

A2 = 30

B = 66

S = 25

A5 = 90

A7 = 13

Mass = 6.7 kg

Basic Dynamic Load Rating Cr :	71500 N				
Basic Static Load Rating Cor :	44800 N	O.D.Surface Runout with Side :			-
Limiting Speed ;		Axial Runout with Bore :			-
Grease Lubrication :	- rpm	Axial Runout with Raceway :			-
Oil Lubrication :	- rpm	Width Variation :			-
		Radial Runout :			-