

ROECO

Bearing Data

Ball Bearing Units

Bearing No. : **CUCF206CE**

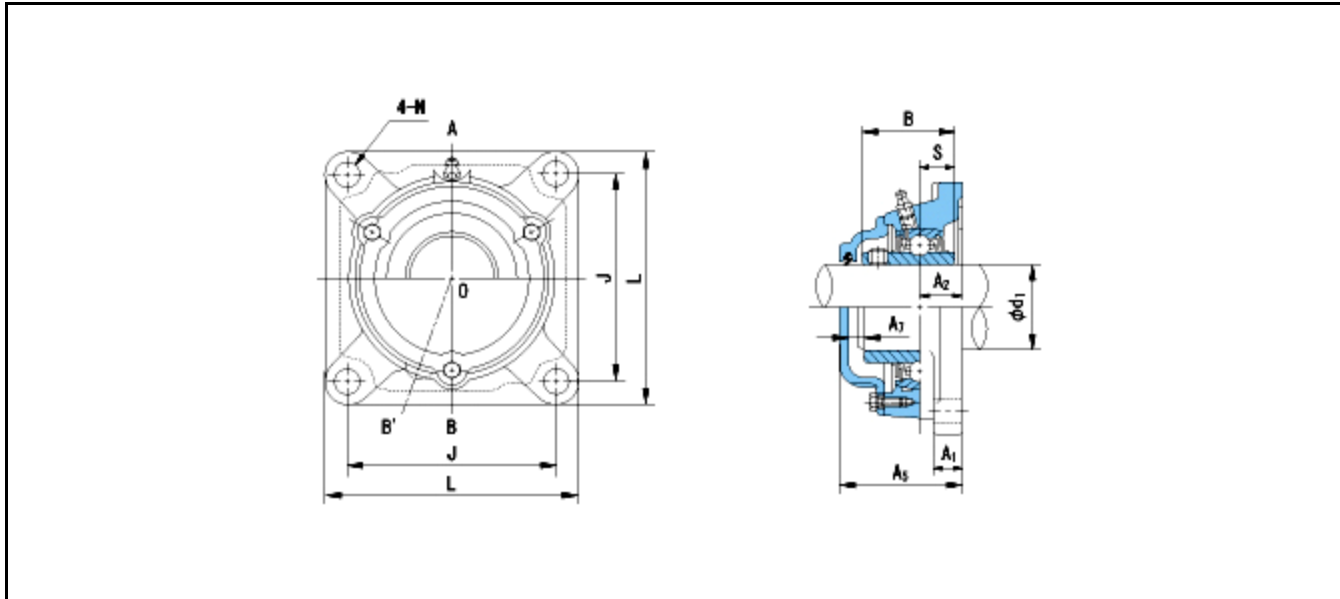
Dimensions

L = 108

J = 83

N = 12

A = 31



Dimensions

d1 = 30

A1 = 14

A2 = 18

B = 38.1

S = 15.9

A5 = 55

A7 = 8

Mass = 1.6 kg

Basic Dynamic Load Rating Cr :	19600 N			
Basic Static Load Rating Cor :	11300 N	O.D.Surface Runout with Side :		-
Limiting Speed ;		Axial Runout with Bore :		-
Grease Lubrication :	- rpm	Axial Runout with Raceway :		-
Oil Lubrication :	- rpm	Width Variation :		-
		Radial Runout :		-